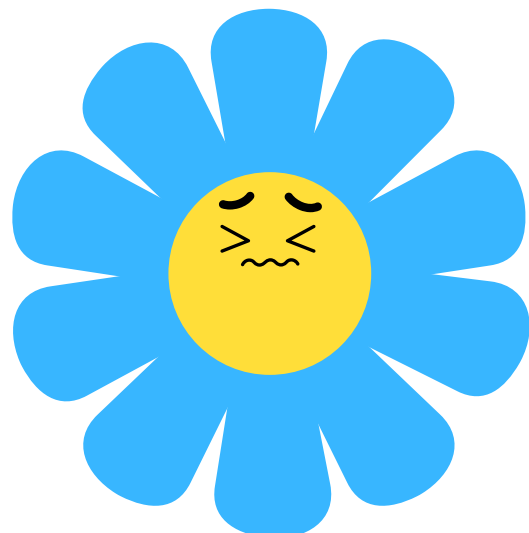
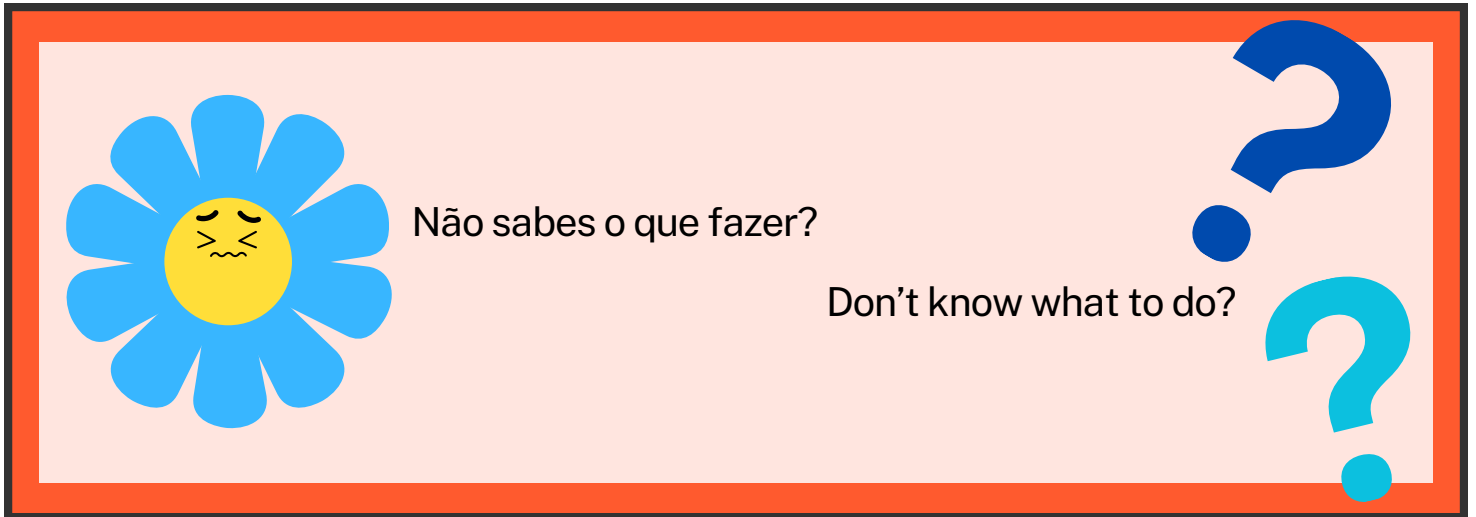


A pessoa que agride pode ser qualquer pessoa em contexto ComParte.

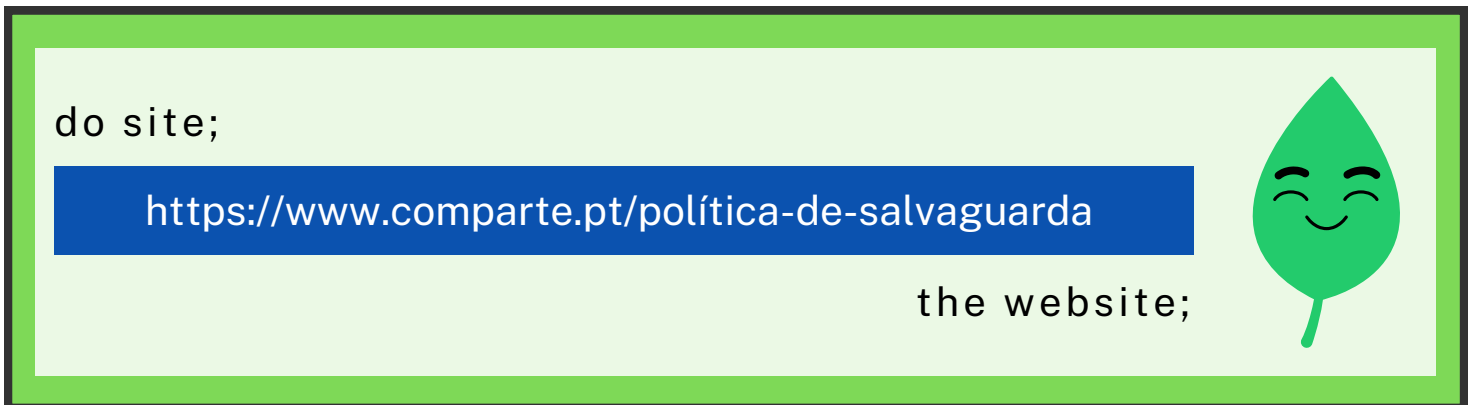
The perpetrator can be anyone in ComParte context.



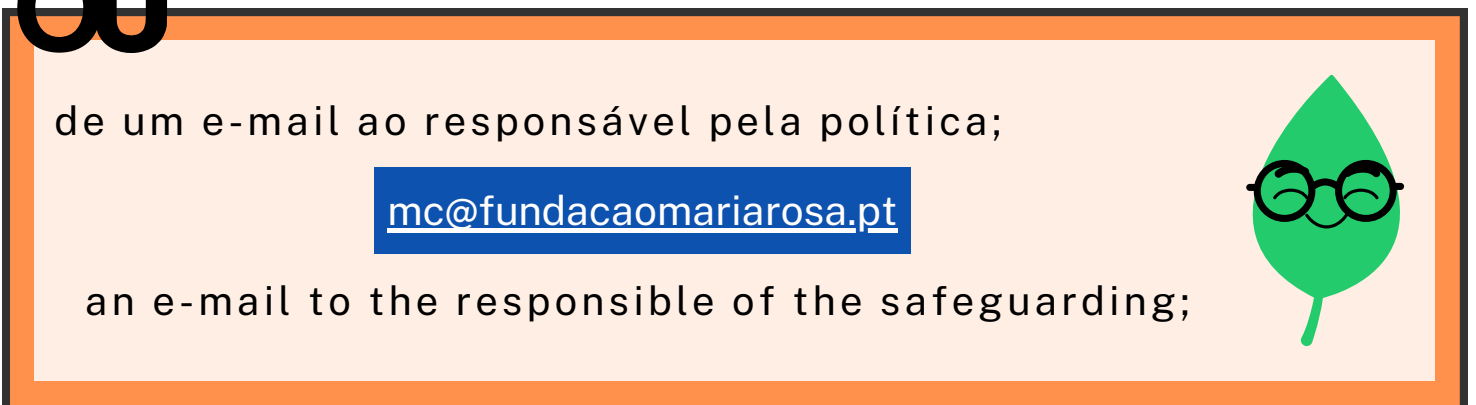


Podes comunicar o caso através:

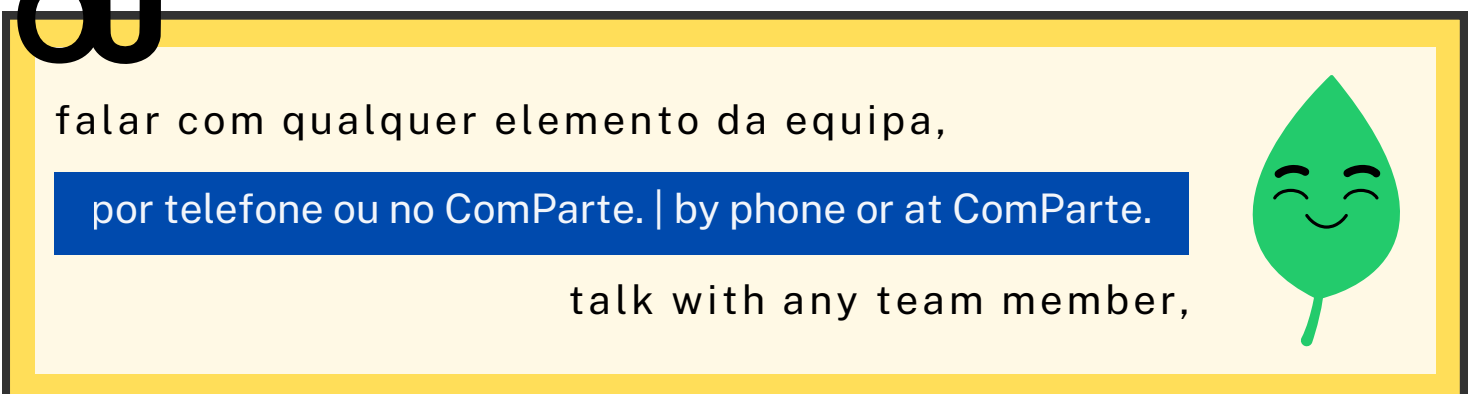
You can make a complaint through:



ou



ou

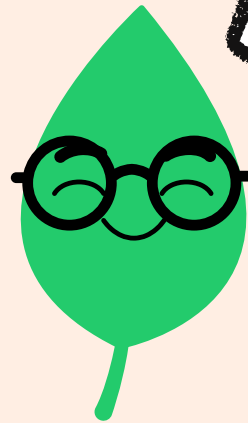


Em qualquer caso, deve falar-se com o Responsável pela Política de Salvaguarda.

In any case, we should alert the responsible for the safeguarding.

É a minha vez de entrar em ação!
Vou **escrever o relatório** mais claro que conseguir!

It's my turn to take action! I will
write the clearest **report** that I can!

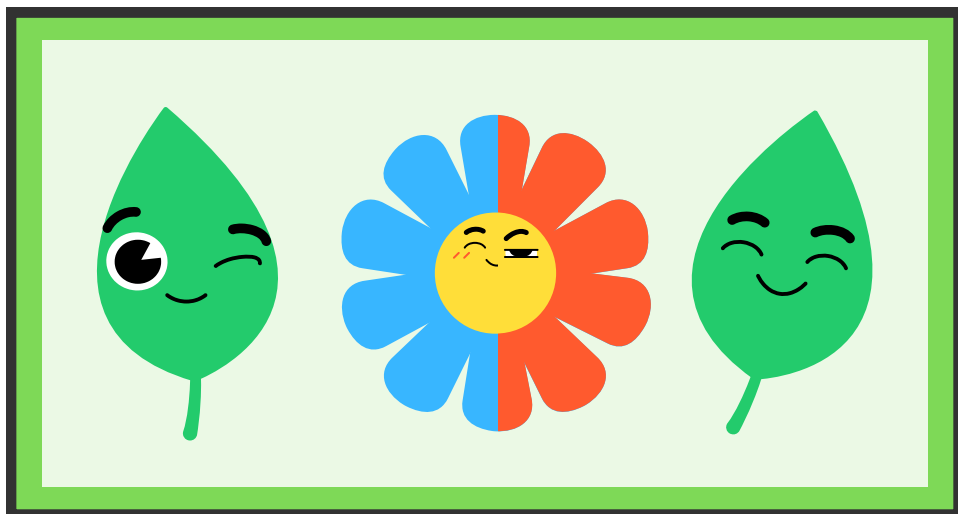


Caso haja indícios de abuso, deve fazer-se a denúncia junto das autoridades.

If there is evidence of abuse, the complaint should be made with the authorities.

Durante todo processo,

During the whole process,



serás acompanhado pela equipa e envolvido e informado sobre o processo!

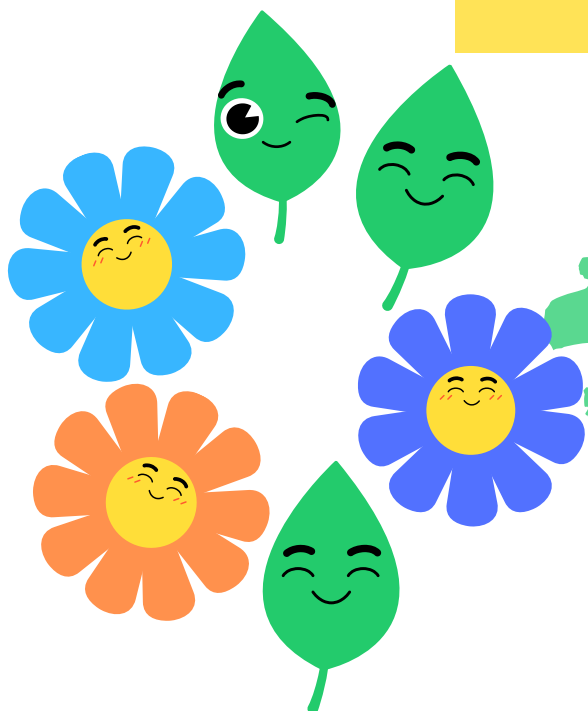
you will be accompanied by the team, involved and informed about the process!

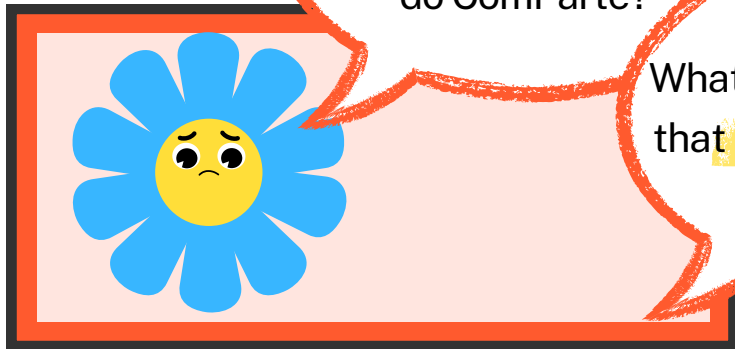
Independentemente do desfecho do mesmo,

Regardless of the outcome,

o Pró pode sempre continuar a participar nas atividades ComParte!

the Pro can always continue to participate in ComParte activities!



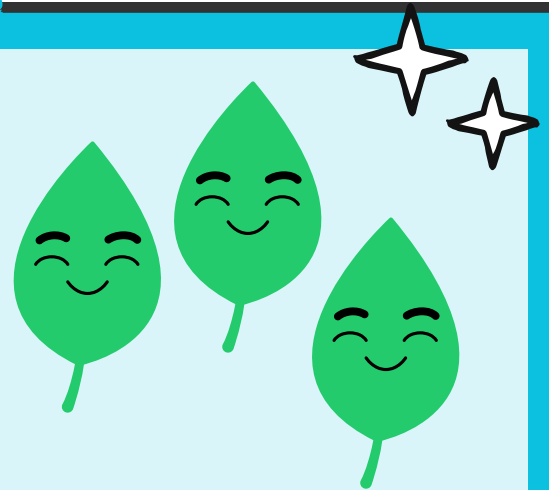


E se eu partilhar uma coisa que aconteceu fora do ComParte?

What if I share something that happened outside of ComParte?

Nesse caso reunimos, pelo menos, 3 membros da equipa ComParte para pensarmos os próximos passos.

In this case, we bring together, at least, 3 members of the ComParte team to think about the next steps.



Podendo, caso necessário, entrar em contacto com as entidades competentes.

If necessary, we'll contact the relevant authorities.

Caso estejas numa situação de risco o ComParte atua em 24 horas. Caso estejas em perigo, o ComParte atua imediatamente.

If it is a risk situation, ComParte acts in 24 hours. If you are in danger, ComParte acts immediately.